

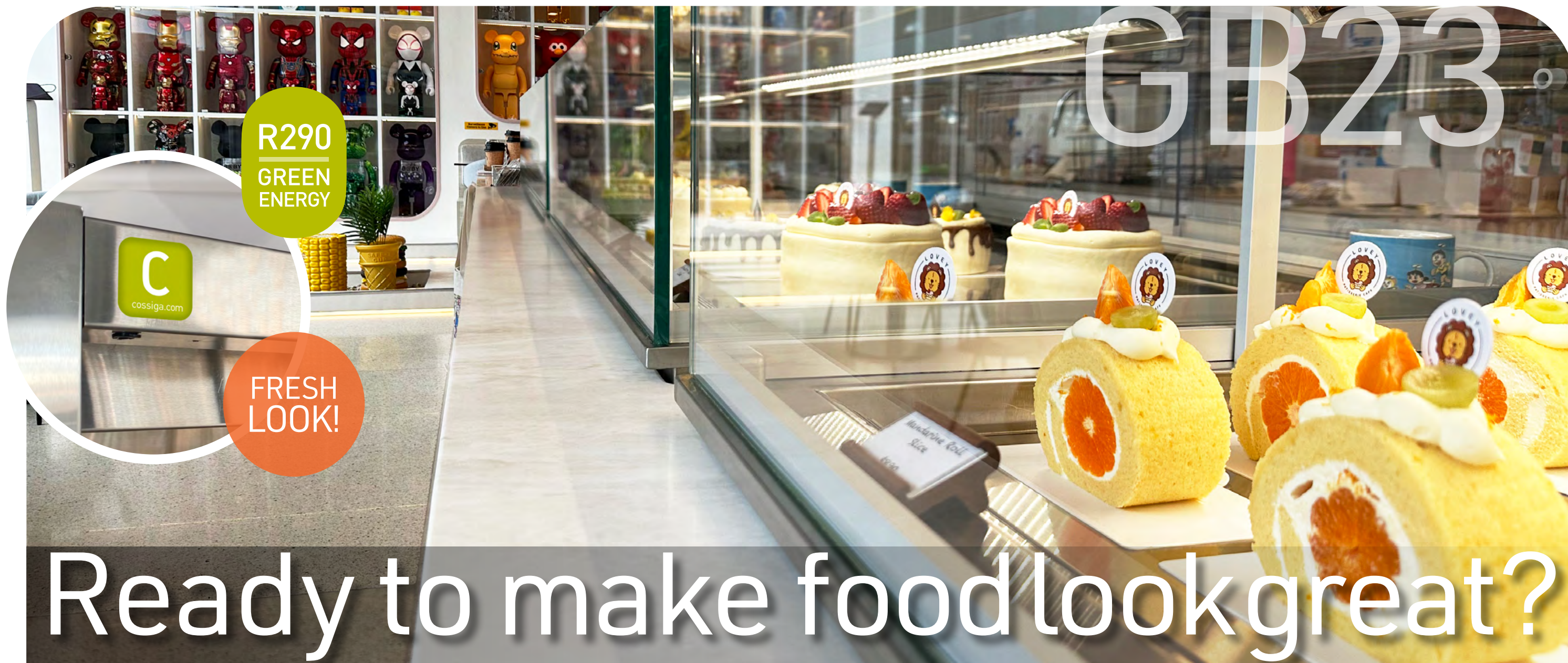


AUS
APRIL
23

C

cossiga

Making food look great globally



Welcome to our **Greenbook 23**, an easy-to-use tool that offers all the information and inspiration that you might need when considering buying or specifying Cossiga's food display cabinets. As always, we're here to help you **make food look great anytime, anywhere.**

TOWER

FREE-STANDING

MULTIDECK DTG.....	8-13
BTG.....	14-19
LP PLUS.....	26-27

COUNTER TOP

STG.....	20-23
GOG.....	28-29

LINEAR

DROP IN / SERVERY

LSRF Refrigerated	32-33
LSCM Ceramic hot plate	34
LSBM Bain Marie	35
LSCK Counter Kit	36
LSHC Hot cupboard	37
LINEAR ACCESSORIES	38-40
PACKAGING/WARRANTY	41
GALLERY	42-43

Note: all prices are LIST in AUD ex GST. Freight Tailgate Delivery available Australia wide, or Customer Collection from selected locations. Contact our office or speak with your account manager to discuss delivery pricing.

Driven by our New Zealand ethos,
we design, manufacture and distribute globally
food display cabinets that make food look great and
help make the planet greener, one cabinet at a time.



Get to
know
us:



Grant Horne
Corporate Sales Manager
grant@cossiga.com
+61 499 991 573



Jay Dwyer
National Manager
jay@cossiga.com
+61 499 501 150



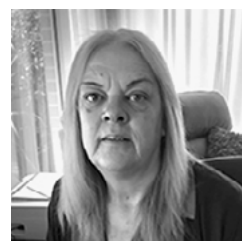
Doug Kenyon
Sales Manager
QLD, NSW, NT & WA
doug@cossiga.com
+61 428 678 887



Andrew Sinclair
Sales Manager
VIC, SA & TAS
andrews@cossiga.com
+61 448 678 123



Ben Burns
Corporate Account
Manager
ben@cossiga.com
+61 487 127 601



Carol Macfarlane
Sales & Support
Coordinator
operations@cossiga.com
+61 300 099 215

NEW ZEALAND HEAD OFFICE SUPPORT



Mike Brougham
Managing Director
mike@cossiga.com
Phone: +64 21 666 794



Tim Rillstone
Commercial Director
tim@cossiga.com
+64 21 952 426



Kerry Schollum
Global Operations Manager
kerry@cossiga.com
+64 21 739 594



Ian Lochhead
Financial Controller
ianl@cossiga.com
+64 958 08471



Michelle Nicholas
Accounts
accounts@cossiga.com
+64 9 580 8471

In a nutshell, this is how we roll...

360° friendly service

At Cossiga we are passionate about food displays and food environments. We put all our energy and know-how into making the food display experience easy and rewarding for you. We continuously innovate on our designs, technology, systems and operate with full transparency and fresh attitude to **offer an unmatched 360° friendly service** (from product to service pre/post-purchase).



Being Glocal

We operate with a 'glocal' mindset which means thinking globally and acting local. This combines the benefits of an efficient global operation together with the expertise of trusted local support network. The result is an in-depth understanding of each market with local representatives that will work with you to find the best solution for your needs.



Our manufacturing plant

Our smart facility in Foshan, Guangdong (China) is a serious plant where big things happen. Having our own manufacturing operation enables us full control of our value chain and the ability to offer rock-solid distribution, logistics and after-sales support.

Stock ready to go

We manufacture in batches and dispatch to our warehouses globally ensuring constant and timely supply to our customers. Some of our range is project driven or made in small runs to suit our clients' needs.

We love green... and not just on our branding!

We naturally care about the planet and strive to protect the environment and make it greener one cabinet at a time. All of our refrigerated cabinets are now powered by clean, green **R290 energy**. Let's do the right thing!

Oh, and this is our new Showroom!

We are excited to welcome you to our new Melbourne operation with a cool showroom, offices and warehouse to support our growing business..... **Pop in to see us @ 11/578-598**
Princes Hwy, Noble Park North, VIC 3174

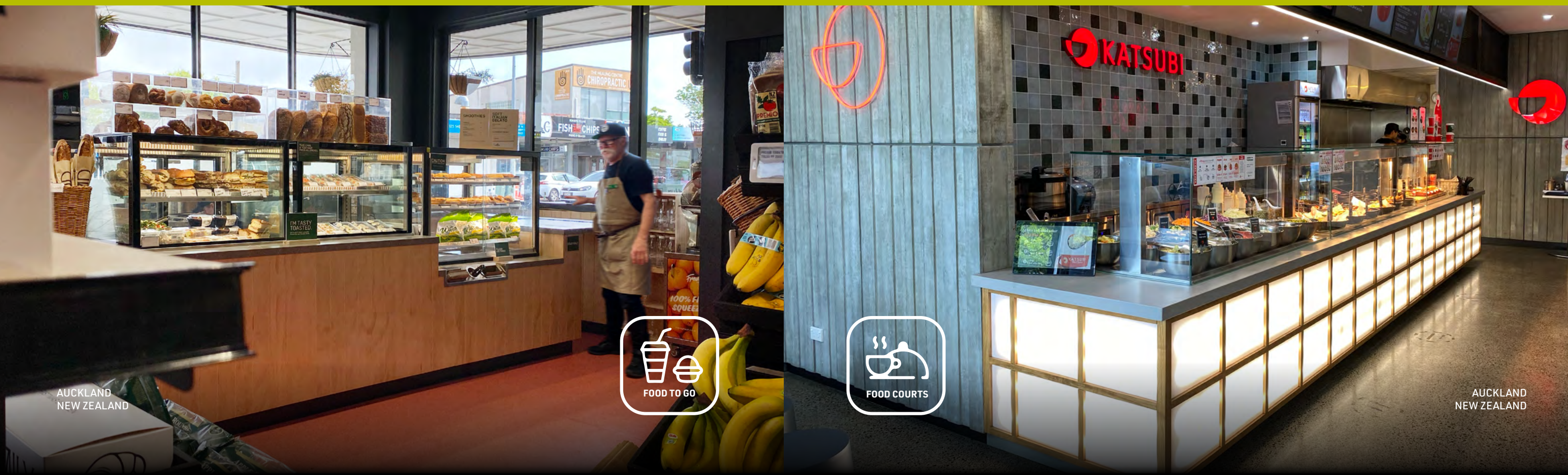


NEW

R290
GREEN
ENERGY



We set the stage, you create the play



FREE-STANDING MULTIDECK DTG

High volume,
and efficiency in
one stylish unit.

Doors are
optional on
Refrigerated

NEW Slimline
LED lights
in hood and
undershelf

Double
glazed
glass ends

304 Grade
Stainless
Steel

Roll in
on castors

Slow
release
night blind

R290
GREEN
ENERGY

Doors are
standard on
Heated

Ticket
strips on
shelves

Four
adjustable
shelves

Protected
Dixell Digital
Controller

Easy-open
new grill design,
to allow simple
maintenance

SELF
EVAPORATING



INNOVATIVE FEATURES & customised options

DTG is designed to adapt to your business needs.



SAVE POWER & be eco-friendly! Do the right thing:

Here are some options to help make draining water more energy efficient.

1. MANUAL

GO
GREEN



No installation
required
New no-spill
bottle design

NO POWER
consumption!
Easy manual empty



2. PUMP2WASTE



Easy plug in
Pipe run up
to 5 metres

VERY LOW POWER
consumption:
0.06KWh /24h

With MULTIDECK DTG our food-to-go range JUST GOT BIGGER!



Effective branding opportunities

As lines between restaurants and grocery retailers are blurring, more C-stores are adding food-service concepts to their offering. Our DTG MULTIDECKS are the ideal high-volume solution!



CONCEPTS TO GO



EASY INTEGRATION

GREATER MARGIN

Retailers are making the most out of this fast-growing, high-margin FTG category. Cossiga are always roll-out ready to deliver on time and on budget!

Talk to us to find out how we can help!

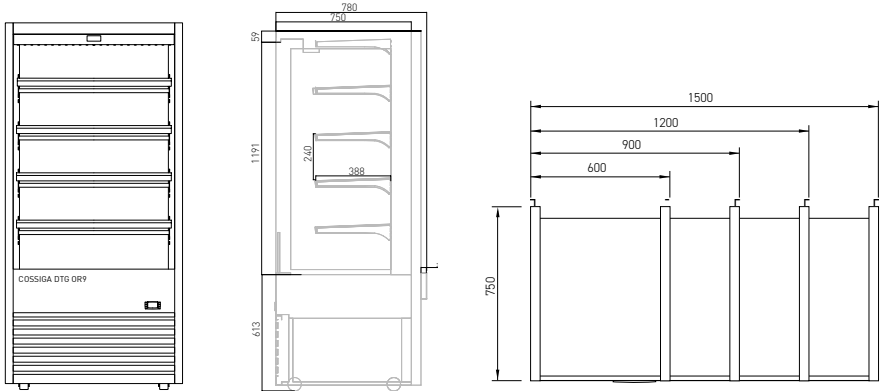
cossiga to go



REFRIGERATED DTGOR



3M1 CLIMATE CLASS



R290
GREEN ENERGY

OPEN FRONT (DTGOR)

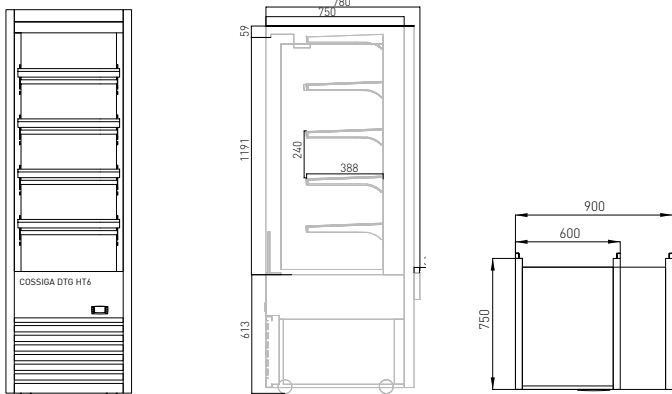
Model	L mm	W mm	H mm	Shelving	Temp	Plugs	Current A	Weight kg	Energy Cons kWh/24h	List Price ex GST
DTGOR6	600	750	1860	4 + base	-1~5°C	10A (220-240V)	5.5	170	14.86	\$7,700
DTGOR9	900	750	1860	4 + base	-1~5°C	10A (220-240V)	4	209	14.05	\$8,800
DTGOR12	1200	750	1860	4 + base	-1~5°C	10A (220-240V)	4.5	281.5	17.28	\$9,950
DTGOR15	1500	750	1860	4 + base	-1~5°C	10A (220-240V)	7.53	298	27.75	\$11,900

HEATED DTGHT



HOT

NEW



HINGED DOOR (DTGHT)

Model	L mm	W mm	H mm	Shelving	Temp	Plugs	Current A	Weight kg	List Price ex GST
DTGHT6	600	750	1860	4 + base	75~85°C	10A (220-240V)	7.7	170	\$7,700
DTGHT9	900	750	1860	4 + base	75~85°C	15A Lead Only (220-240V)	11	209	\$8,800

DTG ACCESSORIES

DESCRIPTION		600	900	1200	1500
Refrigerated Front Door Kit		DTG DK 6 \$1,550	DTG DK 9 \$1,750	DTG DK 12 \$1,850	DTG DK 15 \$1,950
Colour wrap / Decals		Full Wrap \$950 Front Wrap \$800	Full Wrap \$1,100 Front Wrap \$900	Full Wrap \$1,200 Front Wrap \$1,000	Full Wrap \$1,300 Front Wrap \$1,100
Manual no-spill bottle		F93-891 N/C			
Pump 2 Waste		F93-892 N/C			
Security Screen (lockable shutter)		DTG SS 6 \$750	DTG SS 9 \$900	DTG SS 12 \$1,050	DTG SS 15 \$1,200

DTG

MULTIDECKS

HUGE CAPACITY DELI TO GO

NEW



LOOKS
GREAT



VICTORIA
AUSTRALIA

Time to think **BIG!** Our stylish DTG Multidecks offer high-volume where you need it most.

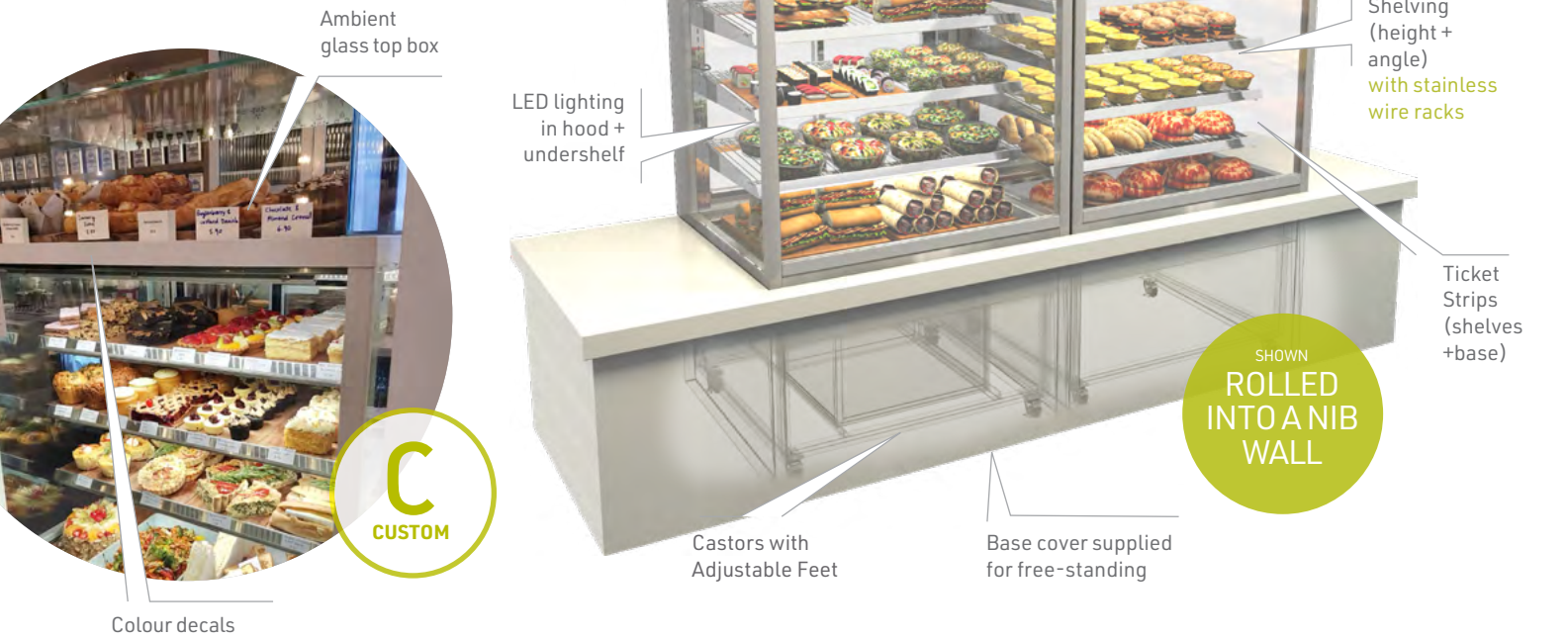


HAWKES BAY
NEW ZEALAND

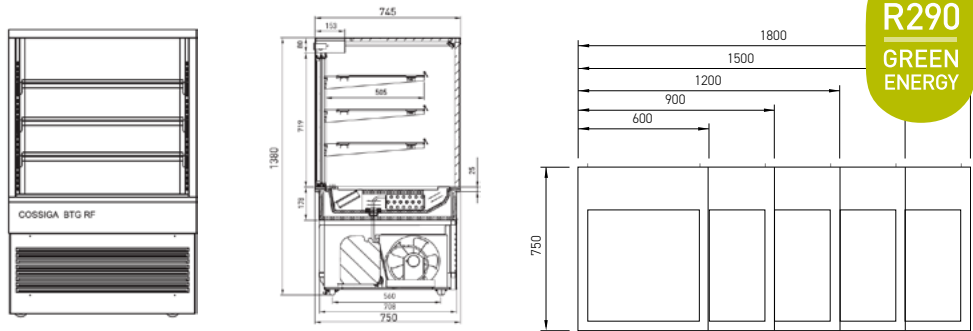


FREE-STANDING TOWER BTG

Stand alone versatility that adapts to any environment



REFRIGERATED OR CONTROLLED AMBIENT BTGRF



SOLID FRONT (BTGRF) with Rear Glass Doors

Model	L mm	W mm	H mm	Shelving	Temp	Plugs	Current A	Weight kg	Energy Cons kWh/24h	List Price ex GST
BTGRF6	600	750	1380	3 + base	3~5°C	10A (220-240V)	5.2	175	13.67	\$8,200
BTGRF9	900	750	1380	3 + base	3~5°C	10A (220-240V)	4.8	224	11.34	\$8,900
BTGRF12	1200	750	1380	3 + base	3~5°C	10A (220-240V)	5.5	273	17.35	\$10,200
BTGRF15	1500	750	1380	3 + base	3~5°C	10A (220-240V)	8.3	322	21.82	\$11,400
BTGRF18	1800	750	1380	3 x 2 + base	3~5°C	10A (220-240V)	7.5	380	23.01	\$12,300

SLIDING FRONT (BTGRF-SD) and Rear Glass Doors

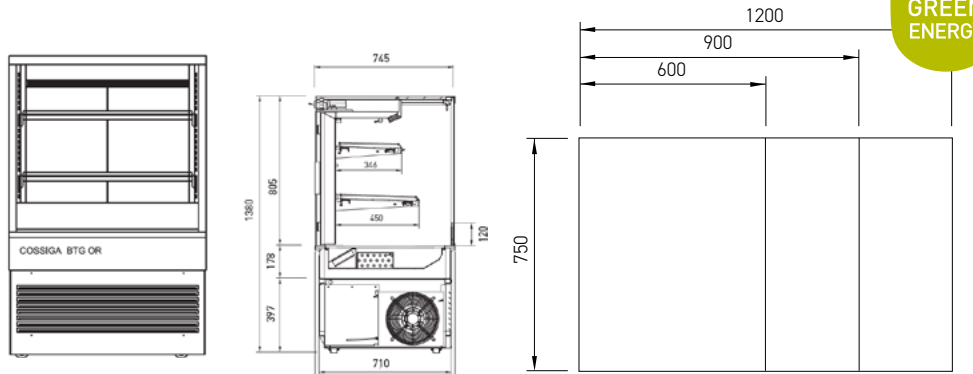
Model	L mm	W mm	H mm	Shelving	Temp	Plugs	Current A	Weight kg	Energy Cons kWh/24h	List Price ex GST
BTGRF6- SD	600	750	1380	3 + base	3~5°C	10A (220-240V)	5.2	175	13.67	\$8,200
BTGRF9- SD	900	750	1380	3 + base	3~5°C	10A (220-240V)	4.8	224	11.34	\$8,900
BTGRF12- SD	1200	750	1380	3 + base	3~5°C	10A (220-240V)	5.5	273	17.35	\$10,200
BTGRF15- SD	1500	750	1380	3 + base	3~5°C	10A (220-240V)	8.3	322	21.82	\$11,400

FEATURES • Heated Double glazed glass • Condensation - free • Deck forced refrigeration • Argon filled doors • Heated subframe • Integral condensor • Self evaporating condensate • Stainless steel wire shelving

REFRIGERATED BTGOR



OPEN FRONT (BTGOR) with Rear Doors

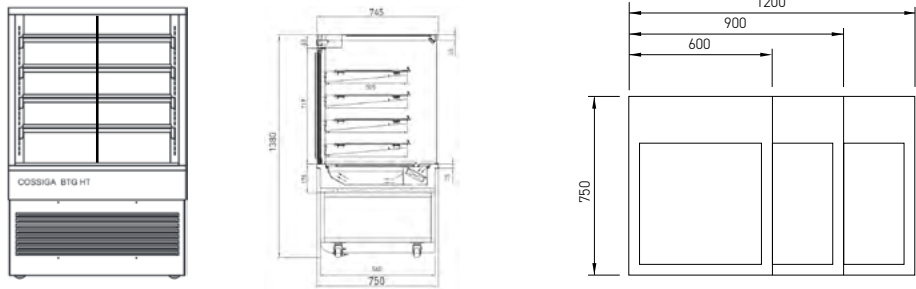


Model	L mm	W mm	H mm	Shelving	Temp	Plugs	Current A	Weight kg	Energy Cons kWh/24h	List Price ex GST
BTGOR6	600	750	1380	2 + base	3~7°C	10A (220-240V)	6	163	15.78	\$10,000
BTGOR9	900	750	1380	2 + base	3~7°C	10A (220-240V)	5.8	204	15.25	\$10,400
BTGOR12	1200	750	1380	2 + base	3~7°C	10A (220-240V)	7.6	273	19.98	\$11,200

FEATURES

- Open front multi tier deck
- Deck forced refrigeration
- Pull down night blind
- Double glazed glass ends
- Hinged rear doors
- Glass shelving

HEATED
BTGHT



SOLID FRONT (BTGHT) with Rear Glass Doors

Model	L mm	W mm	H mm	Shelving	Temp	Plugs	Current A	Weight kg	List Price ex GST
BTGHT6	600	750	1380	4 + base	75-85°C	10A (220-240V)	5.4	118	\$5,700
BTGHT9	900	750	1380	4 + base	75-85°C	10A (220-240V)	7.4	150	\$7,000
BTGHT12	1200	750	1380	4 + base	75-85°C	15A (220-240V)	9.6	182	\$8,200

SLIDING FRONT (BTGHT-SD) and Rear Glass Doors - NEW DESIGN

Model	L mm	W mm	H mm	Shelving	Temp	Plugs	Current A	Weight kg	List Price ex GST
BTGHT6- SD	600	750	1380	4 + base	75-85°C	10A (220-240V)	5.4	118	\$5,700
BTGHT9- SD	900	750	1380	4 + base	75-85°C	10A (220-240V)	7.4	150	\$7,000
BTGHT12- SD	1200	750	1380	4 + base	75-85°C	15A (220-240V)	9.6	182	\$8,200

- FEATURES • Single glazed top + sides • **NEW double element** • Deck forced heating • Stainless steel wire shelving • Humidity dish

AMBIENT
BTGAB

LOOKING FOR AMBIENT? WE'VE GOT YOU COVERED
It's easy. Now we can convert all BTG Heated to static ambient. Get in touch!

BTG ACCESSORIES



Key	Description	List Price ex GST	600	900	1200	1500	1800
a	Top Mounted Controller	Code \$	X000647 \$250				
b	Additional Complete Wire Shelf with LED	Code \$	F90-207 \$315	F90-250 \$350	F90-298 \$385	F90-243 \$420	F90-255 \$490
c	Glass Shelves/each (fits into existing shelf frames)	Code \$	F93-687 \$315	F93-688 \$350	F93-689 \$385	F93-690 \$420	F93-691 \$490
d	Gastro Kit (includes 1/2 GN pan)	Code \$	X000760 \$200				
g	Rear Service Shelf	Code \$	X000369 \$210	X000405 \$265	X000406 \$320	X000407 \$380	
h	Vinyl Decals Half Wrap (HW)/Full Wrap (FW)	Code \$	HW600/ FW600 \$400 \$800	HW900 FW900 \$500 \$900	HW1200 FW1200 \$600 \$1,000	HW1500 FW1500 \$700 \$1,100	HW1800 FW1800 \$800 \$1,200
i	Front Tray Race (with cut outs)	Code \$	X000368 \$240	X000408 \$245	X000409 \$350	X000410 \$390	
j	Leg Extension Kit Set (increases height by 280mm)	Code \$	X000399 \$350				
k	Pie Tray Set	Code \$	AA16015 \$350	AA16016 \$490	AA16017 \$630	AA16018 \$700	
l	Base Rack Set	Code \$	X000359 \$100	X000360 \$140	X000361 \$180	X000364 \$220	
m	Tong Holder	Code \$	X000372 \$125				
n	Bag Holder	Code \$	X000371 \$125				
o	Meltica Panel	Code \$	By others				

HOT FOOD
TO GO

Smooth sliding doors offer an 'opening oven' experience

Subtle heat means food holds for longer

NOT JUST PIES!
Our gastro kits also cater for other hot food such as chicken and chips.



C
CUSTOM

Way to go!

BTGs are cost effective with lower power consumption. Which means less running cost and faster ROI.

AMBIENT
PASTRYBOX

NEW

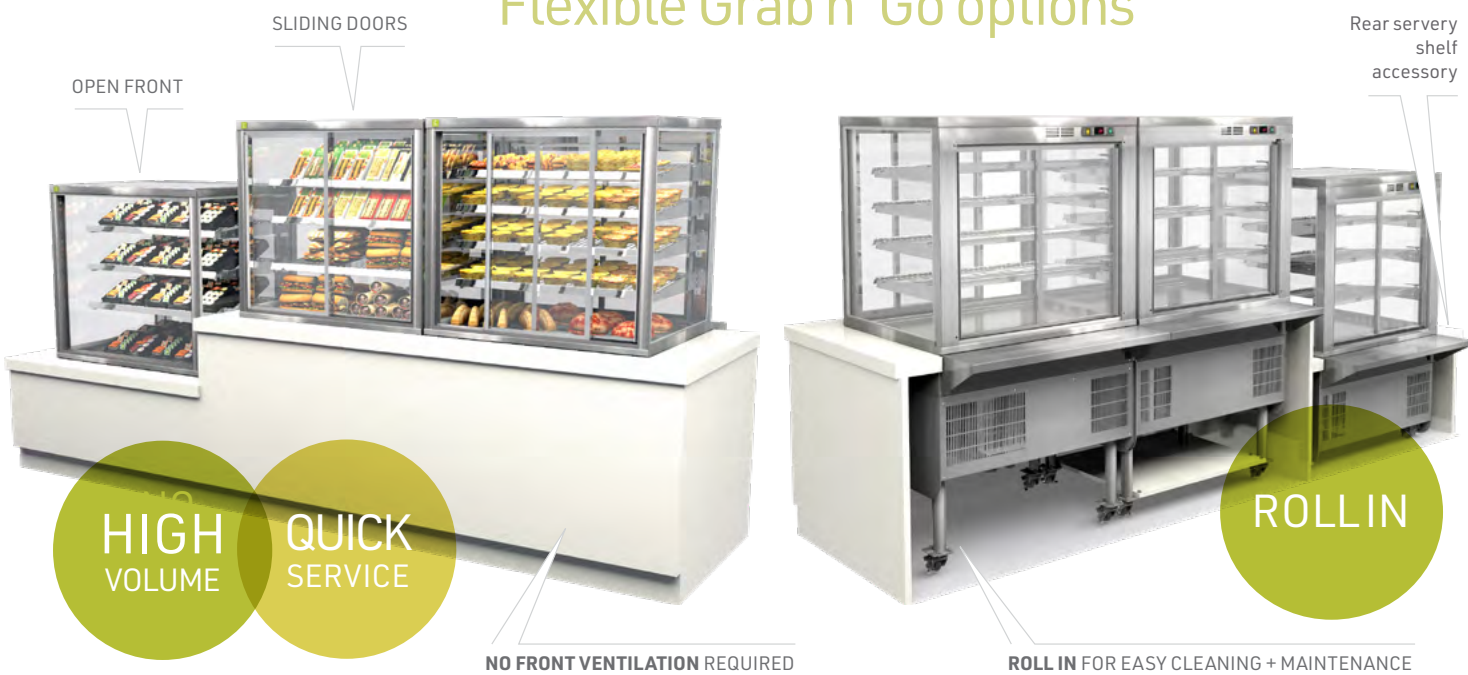


Model	L mm	W mm	H mm	List Price ex GST
PB6	600	325	250	\$400
PB9	900	325	250	\$450
PB12	1200	325	250	\$550
PB15	1500	325	250	\$650



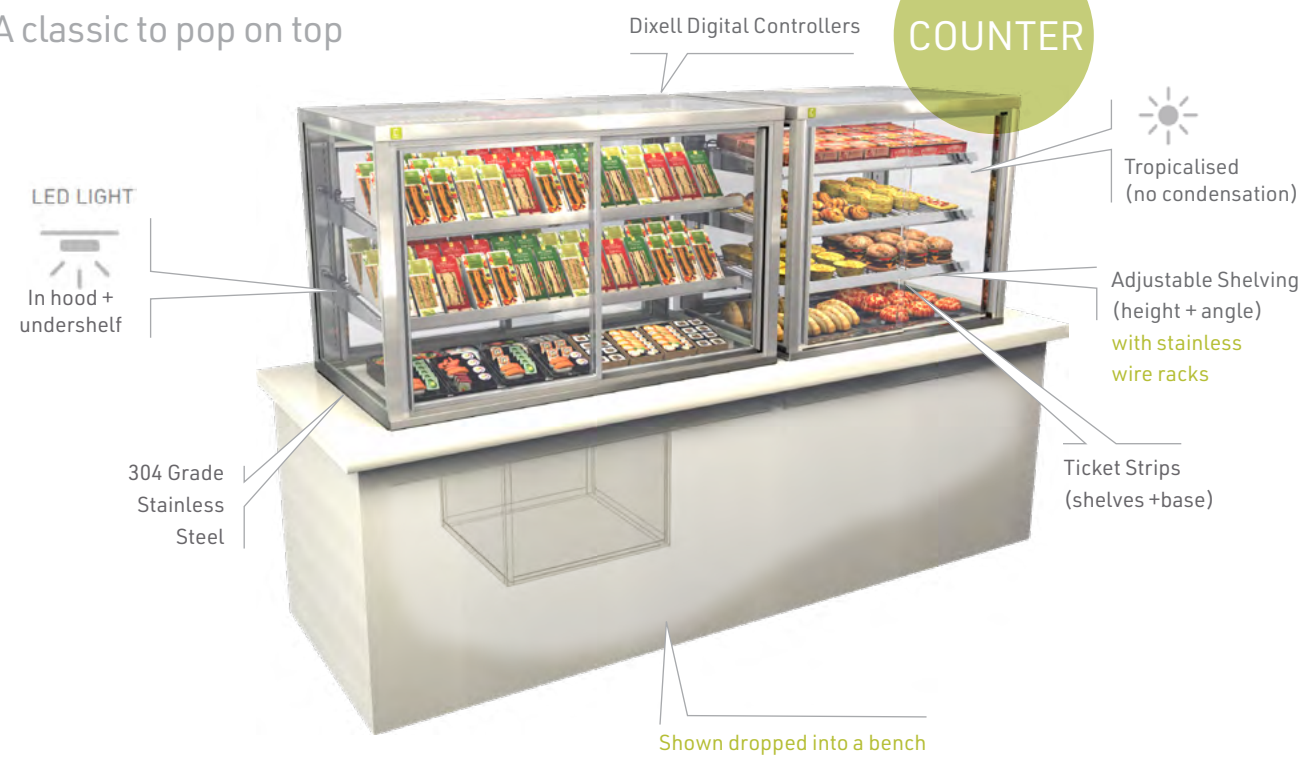
Making things easier!

Flexible Grab n' Go options

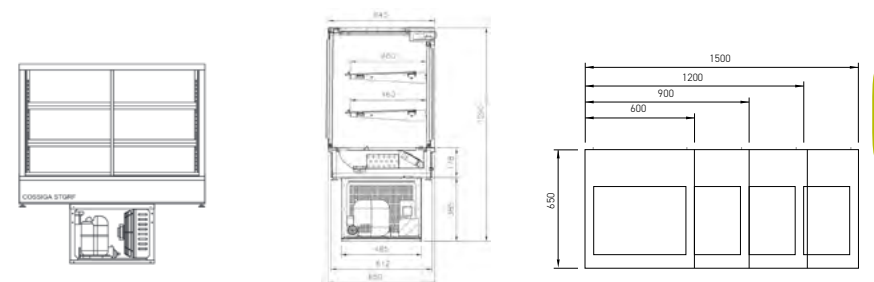


COUNTER TOP TOWER STG

A classic to pop on top



REFRIGERATED OR CONTROLLED AMBIENT STGRF



R290
GREEN
ENERGY

SOLID FRONT (STGRF) with Rear Glass Doors

Model	L mm	W mm	H mm	Shelving	Temp	Plugs	Current A	Weight kg	Energy Cons kWh/24h	List Price ex GST
STGRF6	600	650	925	2 + base	3~5°C	10A (220-240V)	5.2	136	13.67	\$7,500
STGRF9	900	650	925	2 + base	3~5°C	10A (220-240V)	4.6	173	12.1	\$7,700
STGRF12	1200	650	925	2 + base	3~5°C	10A (220-240V)	4.95	205	17.08	\$8,300
STGRF15	1500	650	925	2 + base	3~5°C	10A (220-240V)	5.4	240	18.49	\$8,800

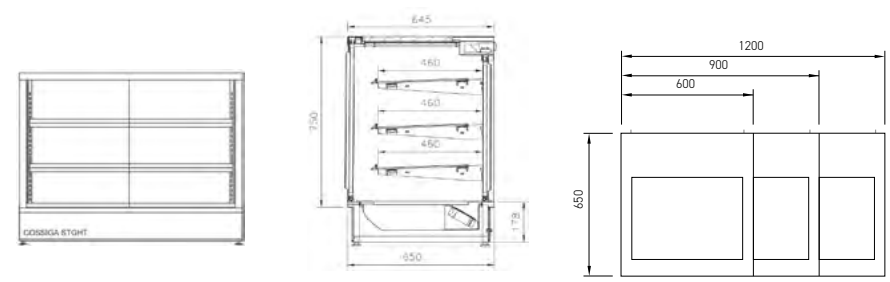


SLIDING FRONT (STGRF-SD) and Rear Glass Doors

Model	L mm	W mm	H mm	Shelving	Temp	Plugs	Current A	Weight kg	Energy Cons kWh/24h	List Price ex GST
STGRF6- SD	600	650	925	2 + base	3~5°C	10A (220-240V)	5.2	136	13.67	\$7,500
STGRF9- SD	900	650	925	2 + base	3~5°C	10A (220-240V)	4.6	173	12.1	\$7,700
STGRF12- SD	1200	650	925	2 + base	3~5°C	10A (220-240V)	4.95	205	17.08	\$8,300
STGRF15- SD	1500	650	925	2 + base	3~5°C	10A (220-240V)	5.4	240	18.49	\$8,800

- FEATURES** • Heated Double glazed glass • Condensation-free • Deck forced refrigeration • Argon filled doors • Heated subframe • Integral condensor • Self evaporating condensate • Stainless steel wire shelving

HEATED STGHT



SOLID FRONT (STGHT) with Rear Glass Doors

Model	L mm	W mm	H mm	Shelving	Temp	Plugs	Current A	Weight kg	List Price ex GST
STGHT6	600	650	925	3 + base	75~85°C	10A (220-240V)	5.4	88	\$5,000
STGHT9	900	650	925	3 + base	75~85°C	10A (220-240V)	7.4	110	\$5,600
STGHT12	1200	650	925	3 + base	75~85°C	15A (220-240V)	9.6	126	\$6,200



SLIDING FRONT (STGHT-SD) and Rear Glass Doors - NEW DESIGN

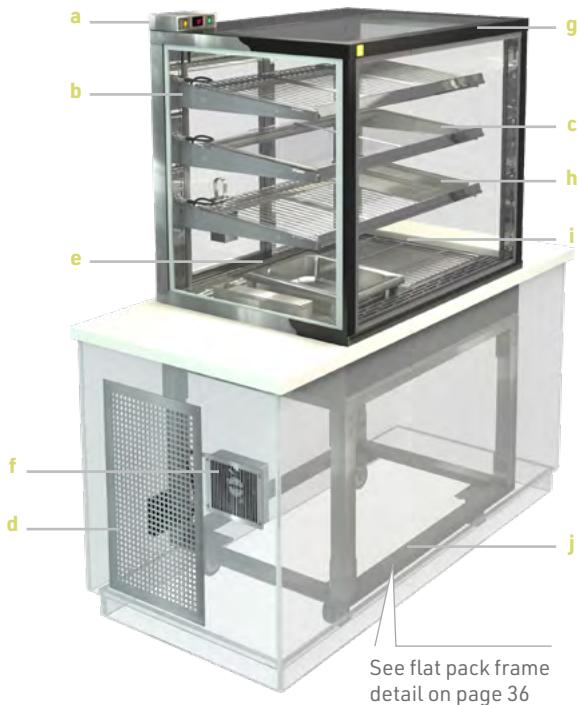
Model	L mm	W mm	H mm	Shelving	Temp	Plugs	Current A	Weight kg	List Price ex GST
STGHT6-SD	600	650	925	3 + base	75~85°C	10A (220-240V)	5.4	88	\$5,000
STGHT9-SD	900	650	925	3 + base	75~85°C	10A (220-240V)	7.4	110	\$5,600
STGHT12-SD	1200	650	925	3 + base	75~85°C	15A (220-240V)	9.6	126	\$6,200

- FEATURES** • Single glazed top + sides • Double element • Deck forced heating • Stainless steel wire shelving • Humidity dish

AMBIENT STGAB

LOOKING FOR AMBIENT? WE'VE GOT YOU COVERED
It's easy. Now we can convert all STG Heated to static Ambient. Get in touch!

TOWER STG ACCESSORIES



Key	Description	List Price ex GST	600	900	1200	1500
a	Top Mounted Controller	Code \$	X000647 \$250			
b	Additional Complete Shelf	Code \$	F90-208 \$315	F90-251 \$350	F90-299 \$385	F90-244 \$420
c	Glass Shelves/each	Code \$	S21-304 \$315	S21-305 \$350	S21-306 \$385	S21-307 \$420
d	Airflow Vent	Code \$	X000401 \$110			
e	Gastro Kit (includes 1/2 GN pan)	Code \$	X000760 \$200			
f	Extraction Fan	Code \$	X000611 \$180			
g	Vinyl Decals	Code \$	HW600 \$400	HW900 \$500	HW1200 \$600	HW1500 \$700
h	Pie Tray Set	Code \$	AA16015 \$350	AA16016 \$490	AA16017 \$630	AA16018 \$700
i	Base Rack Set	Code \$	X000359 \$100	X000360 \$140	X000361 \$180	X000364 \$225
j	Flatpack Frame	Code \$	/	F93-711 \$1,000	F93-712 \$1,100	F93-713 \$1,200

TOWER STG HOT FOOD OPTIONS

IT'S EASY!

Our modular range works seamlessly together.

LINEAR heated ceramic works great with STG

C
CUSTOM

Custom front self-service serve over

Serve over hot food

Gastro Pans for chicken and chips

COUNTER TOP OR DROP IN

See PAGE 38



COSTA COFFEE



TAMWORTH
UNITED KINGDOM

Looking for ideas and inspiration?



LONDON
UNITED KINGDOM



STAND
OUT



CAMBRIDGE
NEW ZEALAND



FREE-STANDING LP PLUS

Low and sleek!

FRAME
LESS

REFRIGERATED LP PLUS

SOLID FRONT with Sliding Acrylic Rear Doors

LED LIGHT
Overhead
lighting

Large acrylic rear sliding doors

Strip heating
to reduce
condensation

NICHE
DESIGN
RANGE

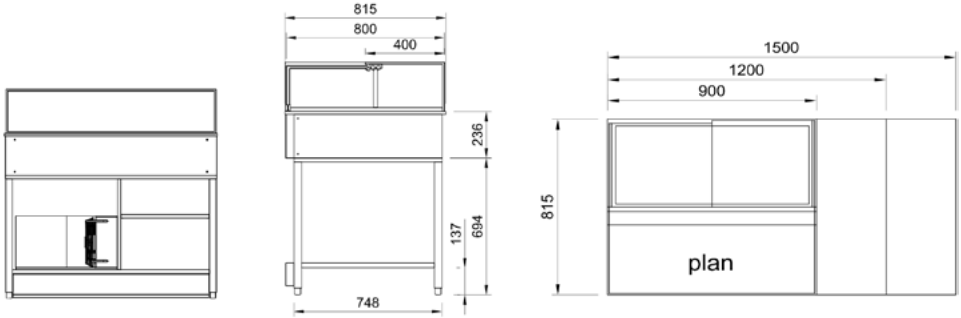
As part of our Niche Design
Range lead times can vary
so talk to us early.

Castors with Adjustable Feet

3M1
CLIMATE
CLASS

FEATURES

- Frameless glass
- Deck forced refrigeration
- Large acrylic rear doors for easy access
- Adjustable base plates



Model	L mm	W mm	H mm	Temp	Plugs	Current A	Weight kg	List Price ex GST
LPRF9	900	815	1180	3-8°C	10A (220-240V)	4.9	172	\$8,000
LPRF12	1200	815	1180	3-8°C	10A (220-240V)	4.9	186	\$8,700
LPRF15	1500	815	1180	3-8°C	10A (220-240V)	4.9	226	\$9,900



EYE
CATCHING

LONDON
UNITED KINGDOM

AUCKLAND
NEW ZEALAND

COUNTERTOP GLASS-ON-GLASS
TOWER GOG
Style with a New York Deli edge

Dixell Digital Controllers

Frameless glass-on-glass

TROPICALISED

LED LIGHT
In hood + undershelf

Adjustable glass shelf (height + angle) with ticket strip

Heated glass top, front + side condensation free

NICHE DESIGN RANGE

As part of our Niche Design Range lead times can vary so talk to us early.



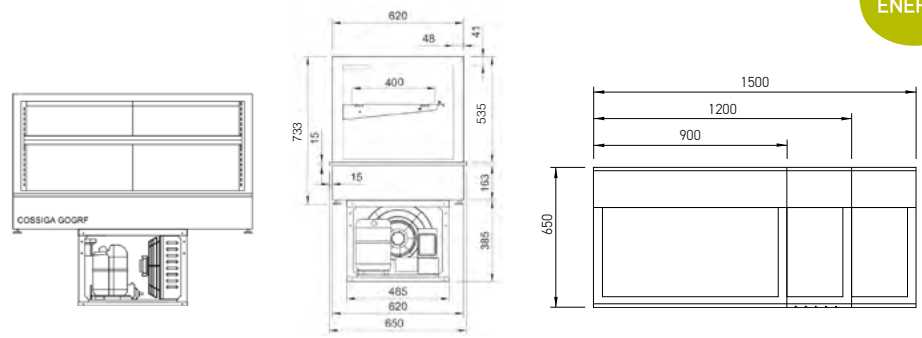
AUCKLAND
NEW ZEALAND

REFRIGERATED
GOGRF



3M1
CLIMATE
CLASS

SOLID FRONT with Sliding Rear Glass Doors



- FEATURES**
- Heated Double glazed glass
 - Condensation - free
 - Deck forced refrigeration
 - Argon filled doors
 - Integral condensor
 - Self evaporating condensate
 - One glass shelf
 - Second shelf available as accessory

Model	L mm	W mm	H mm	Shelving	Temp	Plugs	Current A	Weight kg	Energy Cons kWh/24h	List Price ex GST
GOGRF9	900	650	733	1 + base	3~5°C	10A (220-240V)	4.6	142	10	\$7,900
GOGRF12	1200	650	733	1 + base	3~5°C	10A (220-240V)	4.7	170	12.2	\$8,500
GOGRF15	1500	650	733	1 + base	3~5°C	10A (220-240V)	4.8	195	13.5	\$9,000

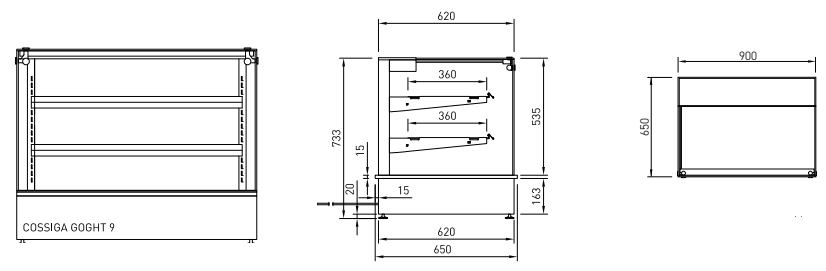
R290
GREEN
ENERGY

HEATED
GOGHT



HOT
NEWS

SOLID FRONT with Sliding Rear Glass Doors



- FEATURES**
- Single glass top side and doors
 - Tilting front glass
 - Deck-forced heating
 - Two stainless wire shelves

Model	L mm	W mm	H mm	Shelving	Temp	Plugs	Current A	Weight kg	List Price ex GST
GOGHT9	900	650	733	2 + base	75~85°C	10A (220-240V)	5.4	99	\$5,800

GOG ACCESSORIES



Key	Description	List Price ex GST	900	1200	1500
a	Additional Complete Glass Shelf/Wire Shelf with LED	Code \$	F93-635 \$350	F93-638 \$390	F93-641 \$450
b	Flatpack Frame	Code \$	CKFF9 \$1,000	CKFF12 \$1,100	CKFF15 \$1,200

See flat pack frame detail on page 36

LINE 'EM UP! LINEAR and GOG are the same height:

IT'S EASY: All our modular range works seamlessly together.

FLEXIBLE

LINEAR

GOG

STG

BTG

LINEAR

Working together

MIX N
MATCH

Making food look great,
anytime, anywhere.

More ideas and inspiration at cossiga.com



WELLINGTON
NEW ZEALAND

LINEAR LS

PLAN, CUSTOMISE AND COMBINE
to create your food service line up.

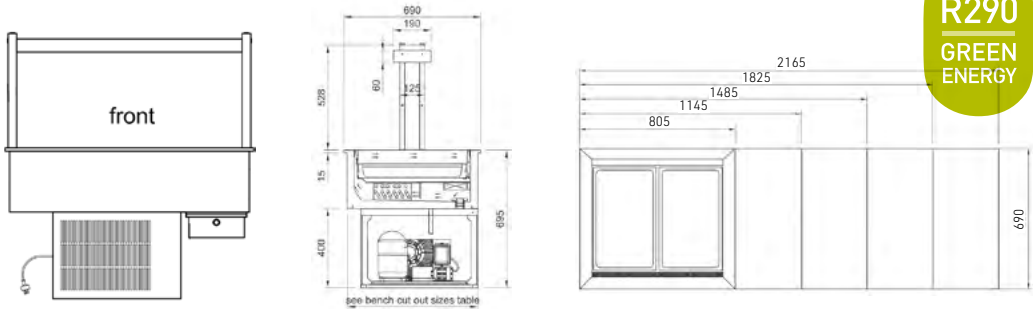


LOOKING
GOOD

CASTLE DONINGTON
UNITED KINGDOM



REFRIGERATED WELL LSRF



R290
GREEN
ENERGY

LSRF Refrigerated Well - Gantry Only with No Glass

Model	L mm	W mm	H mm	GN Pans Supplied	Temp	Plugs	Current A	Weight kg	List Price ex GST
LSRF2	805	690	555	2x1/1 - 65mm	3~5°C	10A (220-240V)	4.8	110	\$8,900
LSRF3	1145	690	555	3x1/1 - 65mm	3~5°C	10A (220-240V)	4.5	128	\$9,200
LSRF4	1485	690	555	4x1/1 - 65mm	3~5°C	10A (220-240V)	4.5	152	\$10,100
LSRF5	1825	690	555	5x1/1 - 65mm	3~5°C	10A (220-240V)	4.8	179	\$11,000
LSRF6	2165	690	555	6x1/1 - 65mm	3~5°C	10A (220-240V)	5.5	201	\$12,100

LSRF Refrigerated Well - Flat Top Sneeze Guard Glass

Model	L mm	W mm	H mm	GN Pans Supplied	Temp	Plugs	Current A	Weight kg	List Price ex GST
LSRF2-FT	805	690	555	2x1/1 - 65mm	3~5°C	10A (220-240V)	4.8	105	\$9,250
LSRF3-FT	1145	690	555	3x1/1 - 65mm	3~5°C	10A (220-240V)	4.5	128	\$9,550
LSRF4-FT	1485	690	555	4x1/1 - 65mm	3~5°C	10A (220-240V)	4.5	152	\$10,850
LSRF5-FT	1825	690	555	5x1/1 - 65mm	3~5°C	10A (220-240V)	4.8	179	\$11,850
LSRF6-FT	2165	690	555	6x1/1 - 65mm	3~5°C	10A (220-240V)	5.5	201	\$13,050

LSRF Refrigerated Well - Square Glass Assisted Service with Acrylic Rear Doors

Model	L mm	W mm	H mm	GN Pans Supplied	Temp	Plugs	Current A	Weight kg	List Price ex GST
LSRF2-FS	805	690	555	2x1/1 - 65mm	3~5°C	10A (220-240V)	4.8	105	\$10,100
LSRF3-FS	1145	690	555	3x1/1 - 65mm	3~5°C	10A (220-240V)	4.5	128	\$10,400
LSRF4-FS	1485	690	555	4x1/1 - 65mm	3~5°C	10A (220-240V)	4.5	152	\$11,300
LSRF5-FS	1825	690	555	5x1/1 - 65mm	3~5°C	10A (220-240V)	4.8	179	\$12,600
LSRF6-FS	2165	690	555	6x1/1 - 65mm	3~5°C	10A (220-240V)	5.5	201	\$13,900



Acrylic covers for fast cool-down and food cover between services



NO
PROBLEM!

Don't need the gantry?
Easy! We can remove before delivery.

CERAMIC HOTPLATE LSCM

Dixell Digital Controllers

Halogen lighting

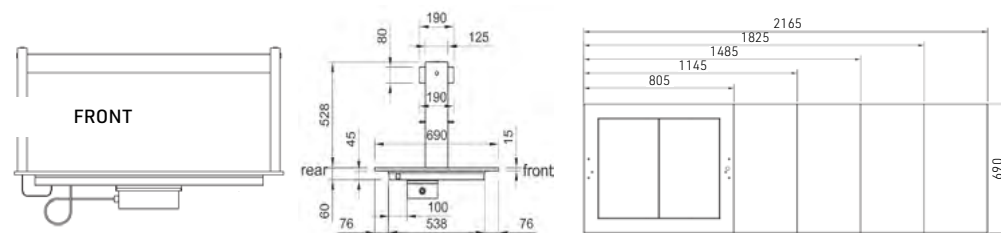
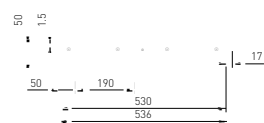
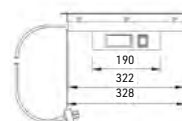


304 Grade
Stainless Steel

LED heat warning
lights on deck



LSSC



LSCM Ceramic Hotplate - Gantry Only with No Glass

Model	L mm	W mm	H mm	GN Plates	Temp	Plugs	Current A	Weight kg	List Price ex GST
LSCM2	805	690	555	2x1/1	75~85°C	10A (220-240V)	7.8	76	\$5,100
LSCM3	1145	690	555	3x1/1	75~85°C	Lead Only (220-240V)	11.7	88	\$5,700
LSCM4	1485	690	555	4x1/1	75~85°C	Lead Only (220-240V)	15.7	107	\$6,700
LSCM5	1825	690	555	5x1/1	75~85°C	Lead Only (220-240V)	19.6	128	\$7,200
LSCM6	2165	690	555	6x1/1	75~85°C	Lead Only (220-240V)	23.5	140	\$8,000

LSCM Ceramic Hotplate - Flat Top Sneeze Guard Glass

Model	L mm	W mm	H mm	GN Plates	Temp	Plugs	Current A	Weight kg	List Price ex GST
LSCM2-FT	805	690	555	2x1/1	75~85°C	10A (220-240V)	7.8	76	\$5,700
LSCM3-FT	1145	690	555	3x1/1	75~85°C	Lead Only (220-240V)	11.7	88	\$6,350
LSCM4-FT	1485	690	555	4x1/1	75~85°C	Lead Only (220-240V)	15.7	107	\$7,450
LSCM5-FT	1825	690	555	5x1/1	75~85°C	Lead Only (220-240V)	19.6	128	\$8,100
LSCM6-FT	2165	690	555	6x1/1	75~85°C	Lead Only (220-240V)	23.5	140	\$9,000

LSCM Ceramic Hotplate - Square Glass Assisted Service with Acrylic Rear Doors

Model	L mm	W mm	H mm	GN Plates	Temp	Plugs	Current A	Weight kg	List Price ex GST
LSCM2-FS	805	690	555	2x1/1	75~85°C	10A (220-240V)	7.8	76	\$6,300
LSCM3-FS	1145	690	555	3x1/1	75~85°C	Lead Only (220-240V)	11.7	88	\$6,900
LSCM4-FS	1485	690	555	4x1/1	75~85°C	Lead Only (220-240V)	15.7	107	\$8,100
LSCM5-FS	1825	690	555	5x1/1	75~85°C	Lead Only (220-240V)	19.6	128	\$8,800
LSCM6-FS	2165	690	555	6x1/1	75~85°C	Lead Only (220-240V)	23.5	140	\$9,800

LSSC Single Ceramic Hotplate - Drop in or on a Base

Model	L mm	W mm	H mm	GN Plates	Temp	Plugs	Current A	Weight kg	List Price ex GST
LSSC1	570	365	/	1x1/1	75~85°C	10A (220-240V)	2.52	18	\$1,550
LSSCF BASE	/	/	/	/	/	/	/	/	\$550



HOT
CHOOK
BAR

BAIN MARIE LSBM

Dixell Digital Controllers

Halogen lighting

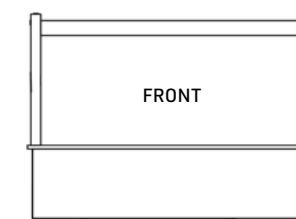


304 Grade
Stainless Steel

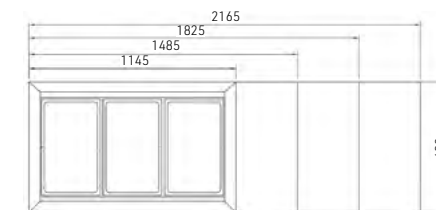
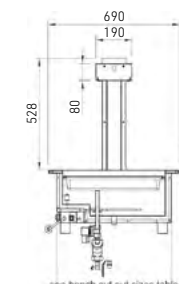


Don't need the gantry?
Easy! We can remove
before delivery.

NO
PROBLEM!



Wet or Dry
Operation



LSBM Bain Marie - Gantry Only with No Glass

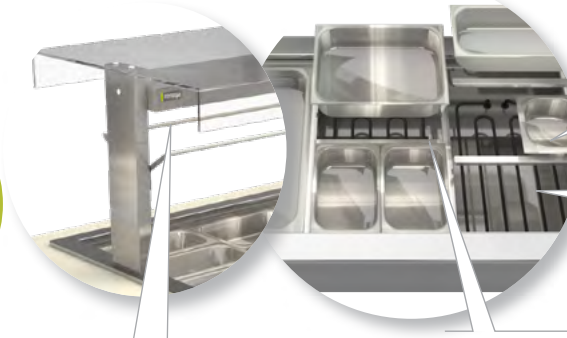
Model	L mm	W mm	H mm	GN Pans	Temp	Plugs	Current A	Weight kg	List Price ex GST
LSBM3	1145	690	555	3x1/1 - 65mm	65~75°C	Lead Only (220-240V)	15	86	\$5,775
LSBM4	1485	690	555	4x1/1 - 65mm	65~75°C	Lead Only (220-240V)	18.7	106	\$6,710
LSBM5	1825	690	555	5x1/1 - 65mm	65~75°C	Lead Only (220-240V)	25	121	\$7,315
LSBM6	2165	690	555	6x1/1 - 65mm	65~75°C	Lead Only (220-240V)	28.5	140	\$7,865

LSBM Bain Marie - Flat Top Sneeze Guard Glass

Model	L mm	W mm	H mm	GN Pans	Temp	Plugs	Current A	Weight kg	List Price ex GST
LSBM3-FT	1145	690	555	3x1/1 - 65mm	65~75°C	Lead Only (220-240V)	15	86	\$6,490
LSBM4-FT	1485	690	555	4x1/1 - 65mm	65~75°C	Lead Only (220-240V)	18.7	106	\$7,535
LSBM5-FT	1825	690	555	5x1/1 - 65mm	65~75°C	Lead Only (220-240V)	25	121	\$8,250
LSBM6-FT	2165	690	555	6x1/1 - 65mm	65~75°C	Lead Only (220-240V)	28.5	140	\$8,910

LSBM Bain Marie - Square Glass Assisted Service with Acrylic Rear Doors

Model	L mm	W mm	H mm	GN Pans	Temp	Plugs	Current A	Weight kg	List Price ex GST
LSBM3-FS	1145	690	555	3x1/1 - 65mm	65~75°C	Lead Only (220-240V)	15	86	\$7,095
LSBM4-FS	1485	690	555	4x1/1 - 65mm	65~75°C	Lead Only (220-240V)	18.7	106	\$8,250
LSBM5-FS	1825	690	555	5x1/1 - 65mm	65~75°C	Lead Only (220-240V)	25	121	\$9,075
LSBM6-FS	2165	690	555	6x1/1 - 65mm	65~75°C	Lead Only (220-240V)	28.5	140	\$9,845



Lower float switch
reduces steam
build-up

Extended
elements
for even heat

Interlocking dividing bars
allow for all gastronorm sizes

Heat lamp
safety bar

Let's get **building:**

COUNTER KIT
LSCK



NEW



COUNTER
LINE UP

Ready to create your own? Check these options:

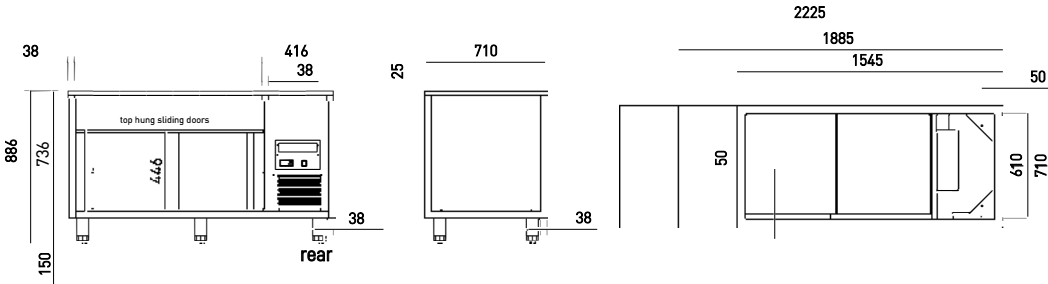
Key	Description	List Price ex GST	3	4	5	6
a	Flatpack Frame	Code \$	CKFF3 \$900	CKFF4 \$1,000	CKFF5 \$1,150	CKFF6 \$1,300
b	Trayrace - Each	Code \$	CKTR3 \$300	CKTR4 \$350	CKTR5 \$400	CKTR6 \$450
c	End Panel - Each	Code \$	CKPN \$300			
d	End Panel - Each With Vent	Code \$	CKEP \$350			
e	Front Panel	Code \$	CKFP3 \$300	CKFP4 \$400	CKFP5 \$500	CKFP6 \$600
f	Base Shelf	Code \$	CKBS3 \$500	CKBS4 \$600	CKBS5 \$700	CKBS6 \$800



HOT CUPBOARD
LSHC

FEATURES

- All 304 stainless construction
- Fan forced heat delivery
- Adjustable feet



LSHC Hot Cupboard

Model	L mm	W mm	H mm	Suits Models	Temp	Plugs	Current A	Weight kg	List Price ex GST
LSHC4	1545	710	886	BM4/CM4	45~75°C	10A (220-240V)	4.6	163	\$5,600
LSHC5	1885	710	886	BM5/CM5	45~75°C	10A (220-240V)	4.6	184	\$5,900
LSHC6	2225	710	886	BM6/CM6	45~75°C	10A (220-240V)	4.6	205	\$6,200



HOT
CUPBOARD

Works with
Bain Marie
or Ceramic



LS HEATED CERAMIC BASE



MAKE IT A
COUNTER
TOP

Works well
with STG
countertop

LS Heated Ceramic Base

Description	Code	List Price ex GST
LSCM2 Base	F93-196	\$600
LSCM3 Base	F93-197	\$620
LSCM4 Base	F93-198	\$680
LSCM5 Base	F93-199	\$700
LSCM6 Base	F93-200	\$760

MARBLE
DECALS

Riser with
marble
decals



LS CUSTOM GLASS

FRONT
DOOR
KIT

GREAT
for sushi

C
CUSTOM



LET'S
TALK



Don't need the
gantry? Easy!
We can remove
before delivery.

NO
PROBLEM!

LS ACCESSORIES

Easy to mix n' match according to your needs



SEE
PAGE 36

MOBILE
TROLLEY

Key	Description	List Price ex GST	3	4	5	6
a	Mirror Rear Doors	Code \$	LS3M \$250	LS4M \$350	LS5M \$450	LS6M \$550
b	Extraction Fan/each	Code \$	X000611 \$180			
c	Glass Mid Shelf	Code \$	GLMS3 \$210	GLMS4 \$280	GLMS5 \$350	GLMS6 \$420

Key	Description	List Price ex GST	3	4	5	6
d	Heat Protection Bumper	Code \$	X000735 \$245	X000736 \$350	X000737 \$315	X000738 \$350
e	Airflow Vent	Code \$	X000401 \$110			
f	Wire Mid Shelf	Code \$	LSMS3 \$350	LSMS4 \$450	LSMS5 \$500	2 x LSMS3



MIRROR
REAR BACK

SWORDS
IRELAND

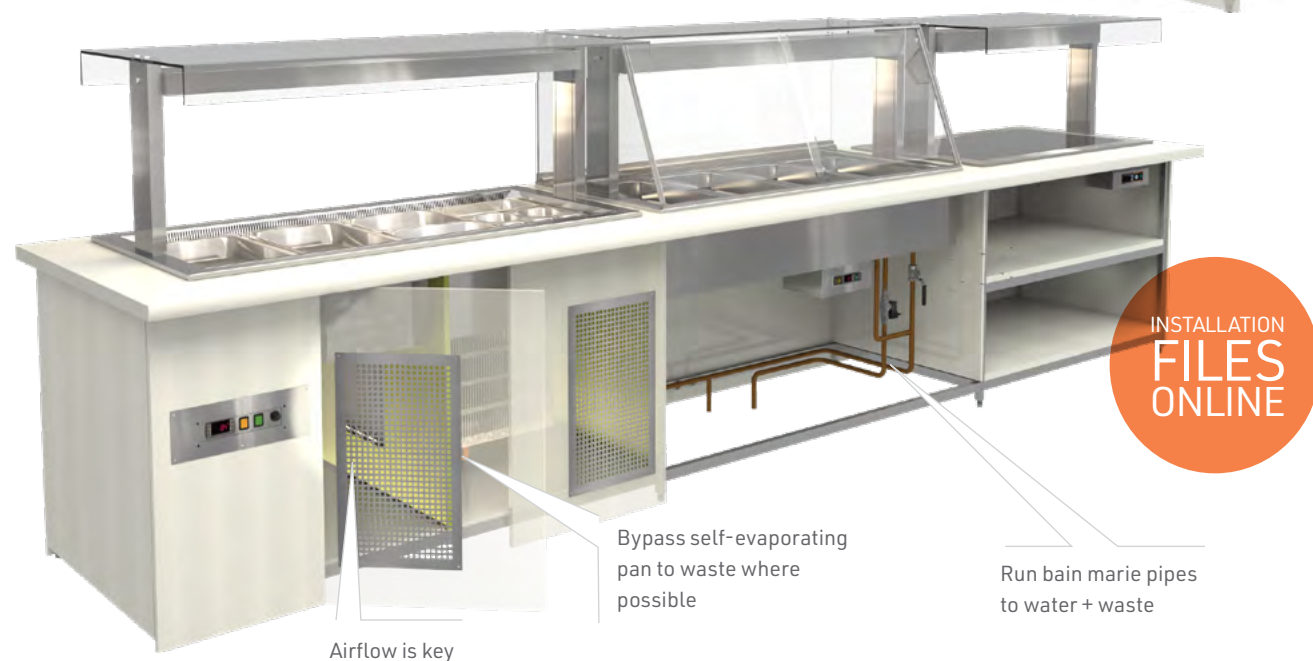
FOOD MARKET

SAVE
POWER

LESS
MAINTENANCE

Do it once, do it right:

Take the time now for long-term efficient performance. Talk to us!



MAKING IT
EASY

ONLINE SUPPORT SECTION:

We've redesigned our SUPPORT section to make everything easier to access, from finding our CAD blocks and Service Files to sending us a service request form!



1 - SPECIFICATION MORE INFO >

2 - INSTALLATION MORE INFO >

3 - MAINTENANCE MORE INFO >

4 - SERVICE MORE INFO >



CLICK &
DOWNLOAD

PACKAGING:

Environmentally friendly
& easy to unpack



WARRANTY:

3-Years. Peace of mind. Easy!



12 MONTHS*
parts + labour

24 MONTHS*
standard parts

36 MONTHS*
major parts

*All subject to 6 monthly preventative maintenance.
See www.cossiga.com for Exclusions + Full Terms and Conditions



PLEASE REMEMBER:

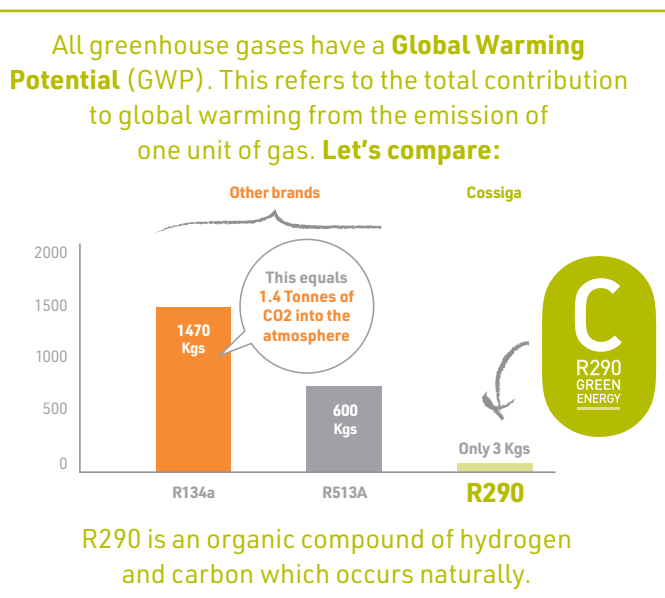
Always service
your cabinets!

- Reduces power consumption
- Optimises performance
- Contributes to longer life

Contact us to discuss a
preventative maintenance program

HOT
TIP





We take care of the environment, one cabinet at a time. Let's do the right thing!



GET IN TOUCH:
1300 099 215

NEW SHOWROOM:
11/578-598 PRINCES HWY,
NOBLE PARK NORTH,
VIC 3174, AUSTRALIA

CONNECT WITH US ON:

in [linkedin.com/company/cossiga](https://www.linkedin.com/company/cossiga)
 [facebook.com/CossigaFoodCabinets](https://www.facebook.com/CossigaFoodCabinets)
 [instagram.com/cossigafoodcabinets](https://www.instagram.com/cossigafoodcabinets)



cossiga

UK

Sales office
Logistics
Service hub
Warehousing

VISIT US
ONLINE
COSSIGA.COM

CHINA

Manufacturing
Design
Engineering
Logistics
Warehousing
Service hub
Asia Sales office

AUSTRALIA

Sales office
Logistics
Service hub
Warehousing

NEW

NEW ZEALAND HEADQUARTERS

Concept
Design
Logistics
Service hub
Warehousing
Sales office

cossiga.com